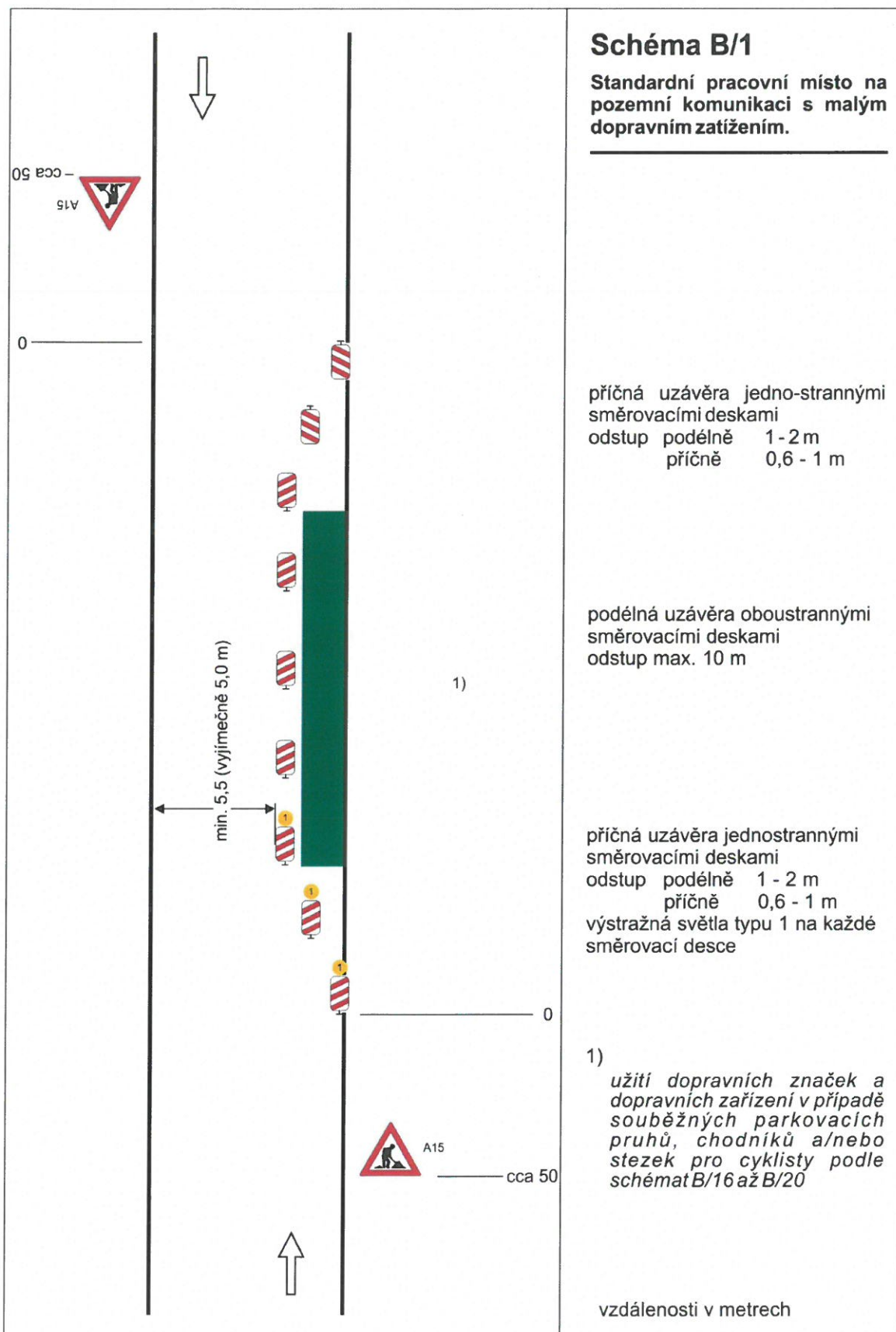
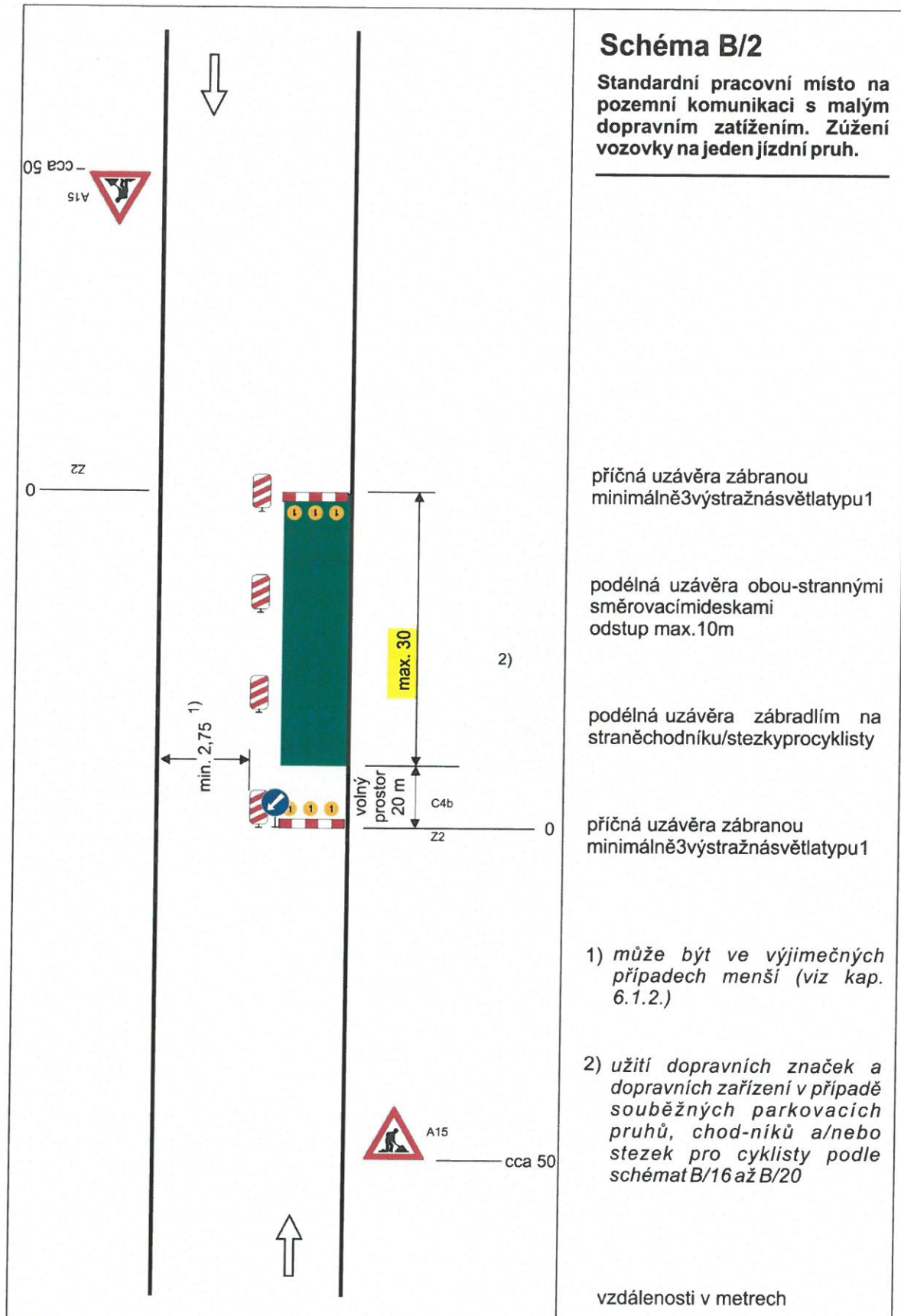
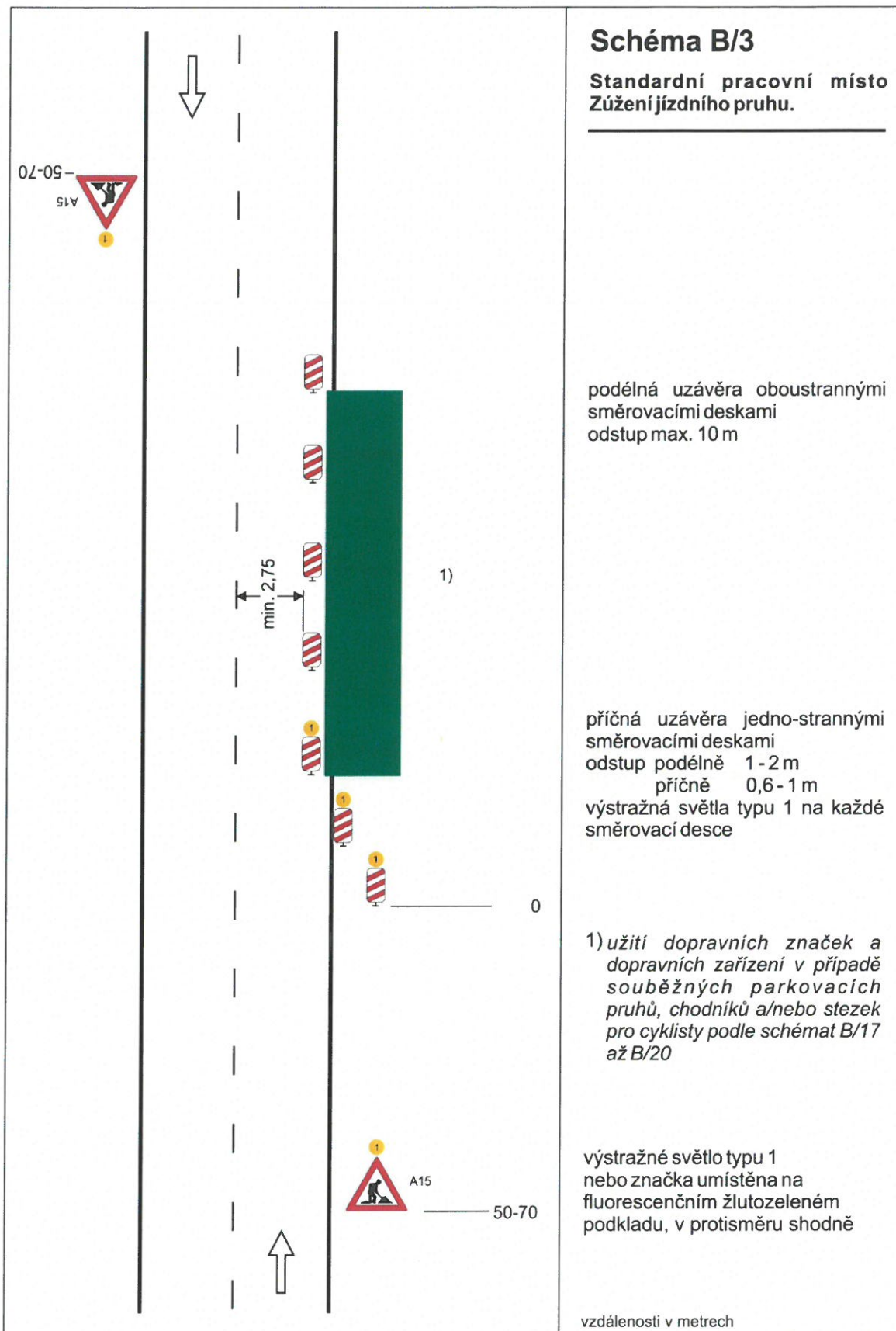
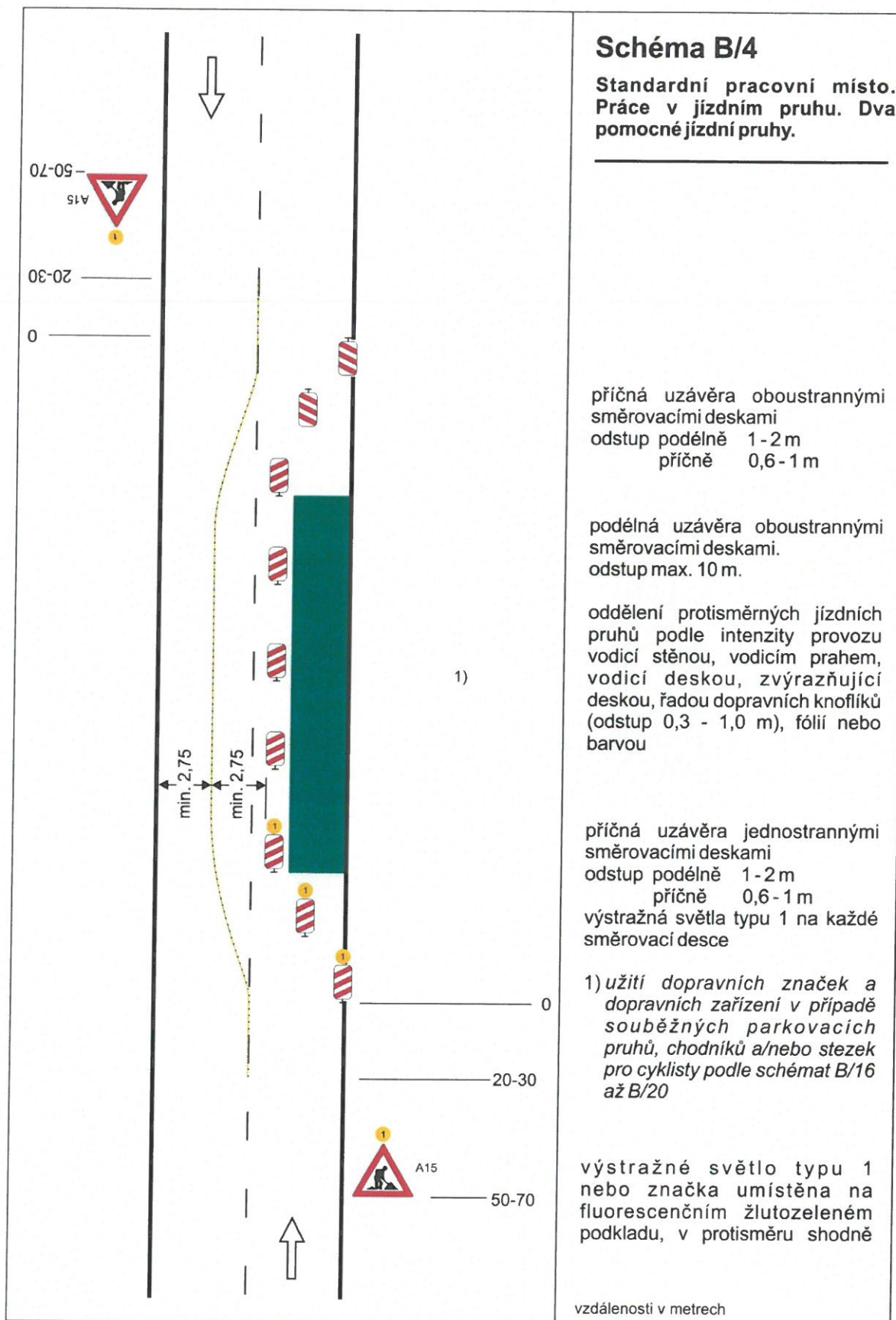


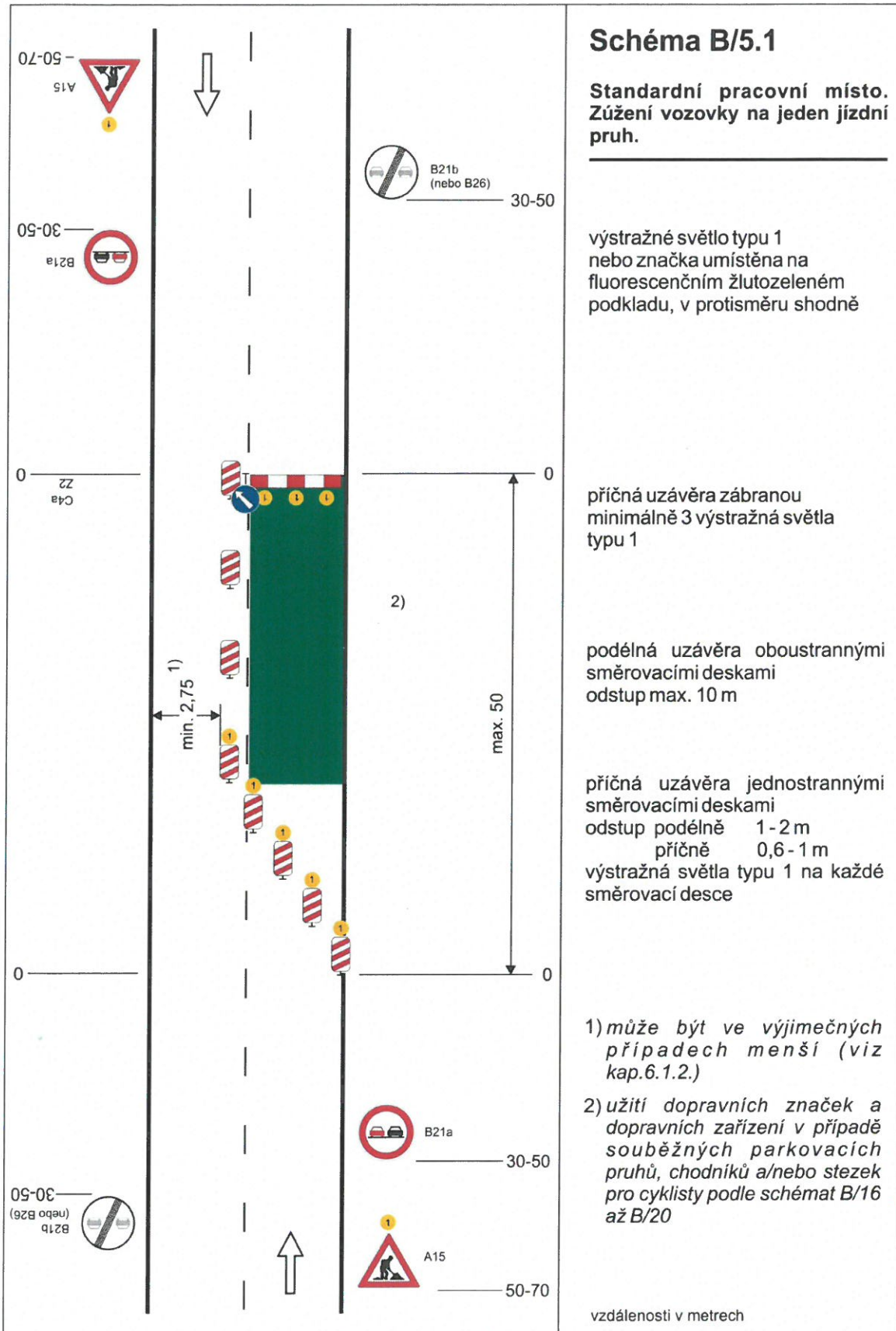
**PRACOVNÍ MÍSTA V OBCI**  
**ŘADA B**

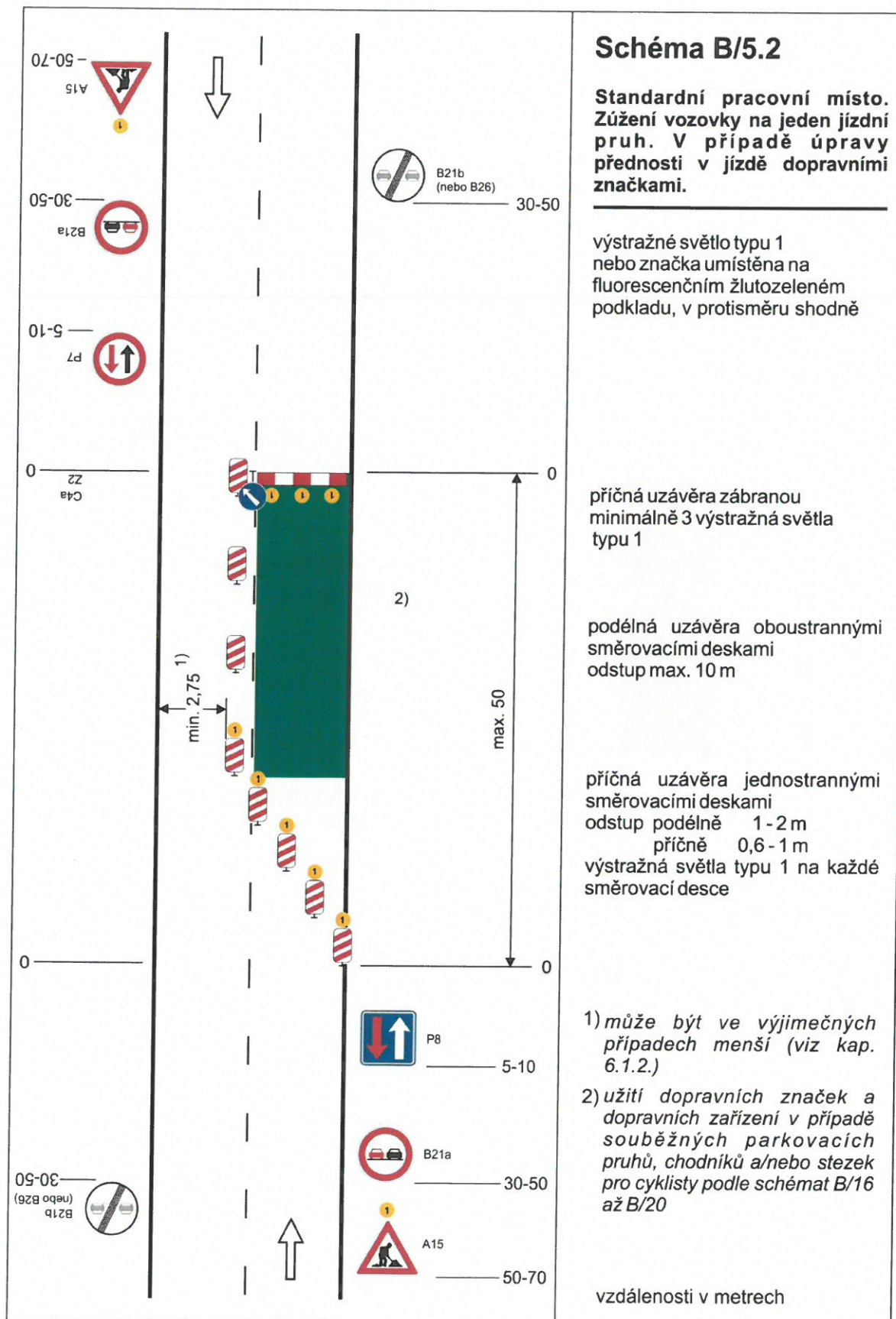


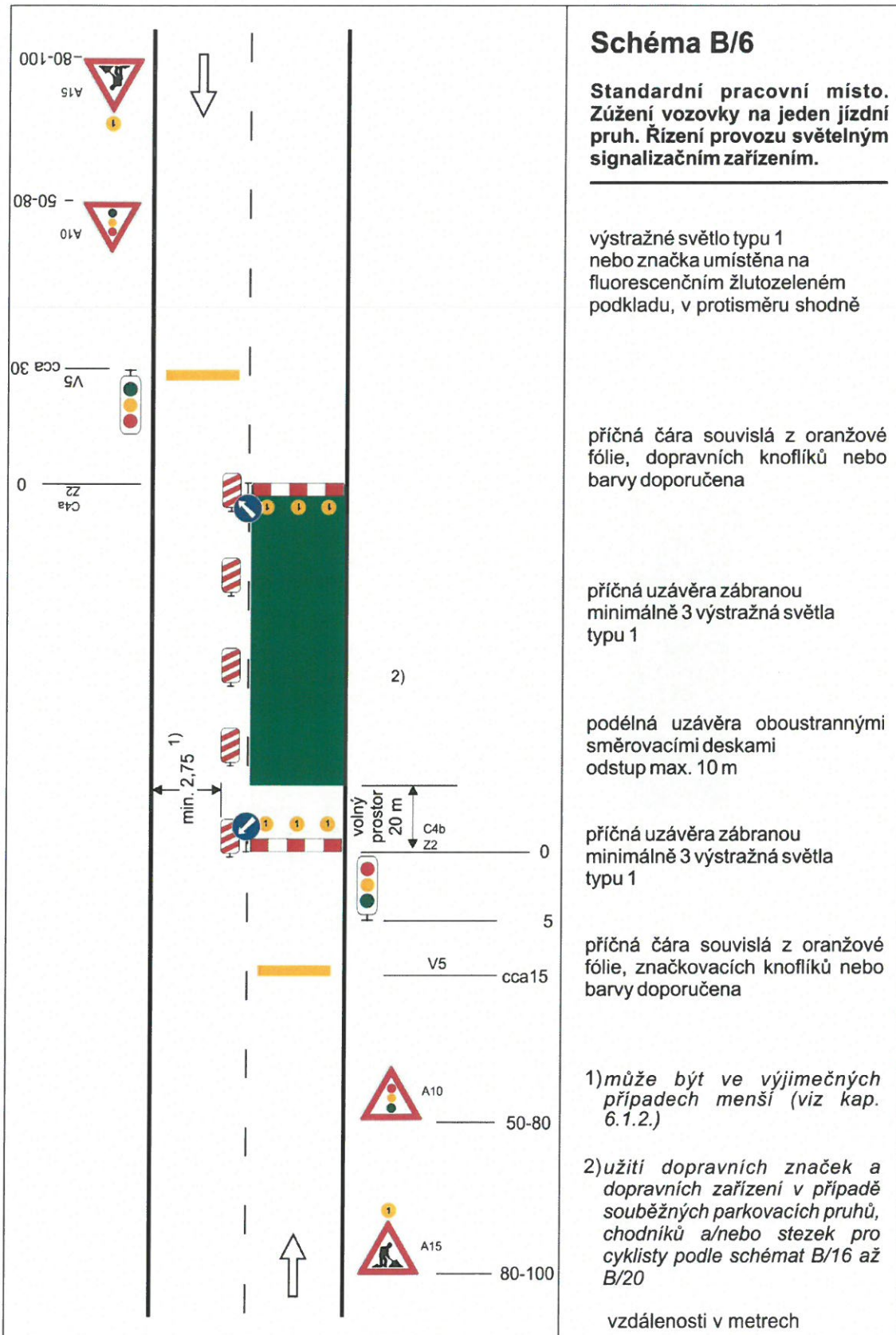




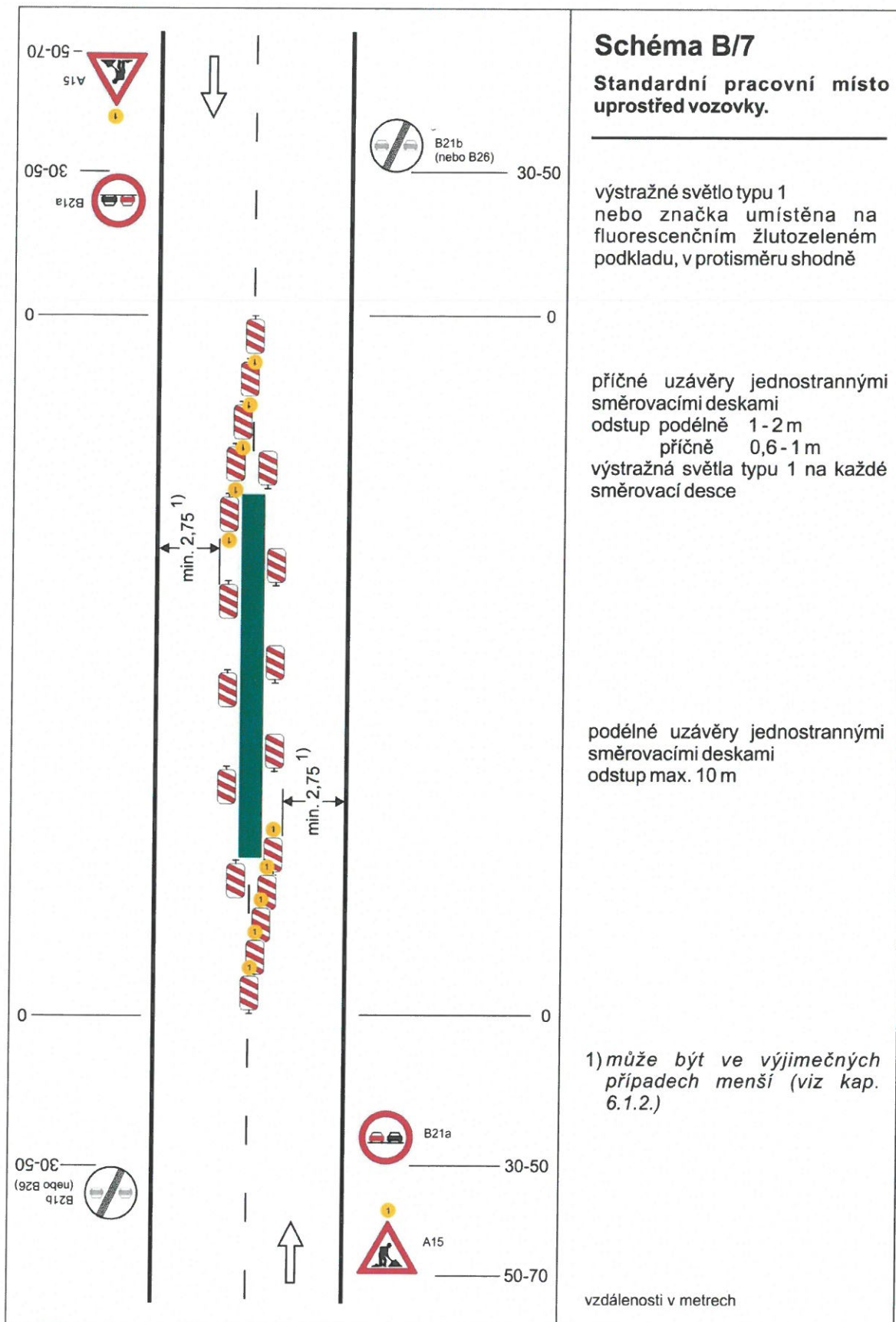


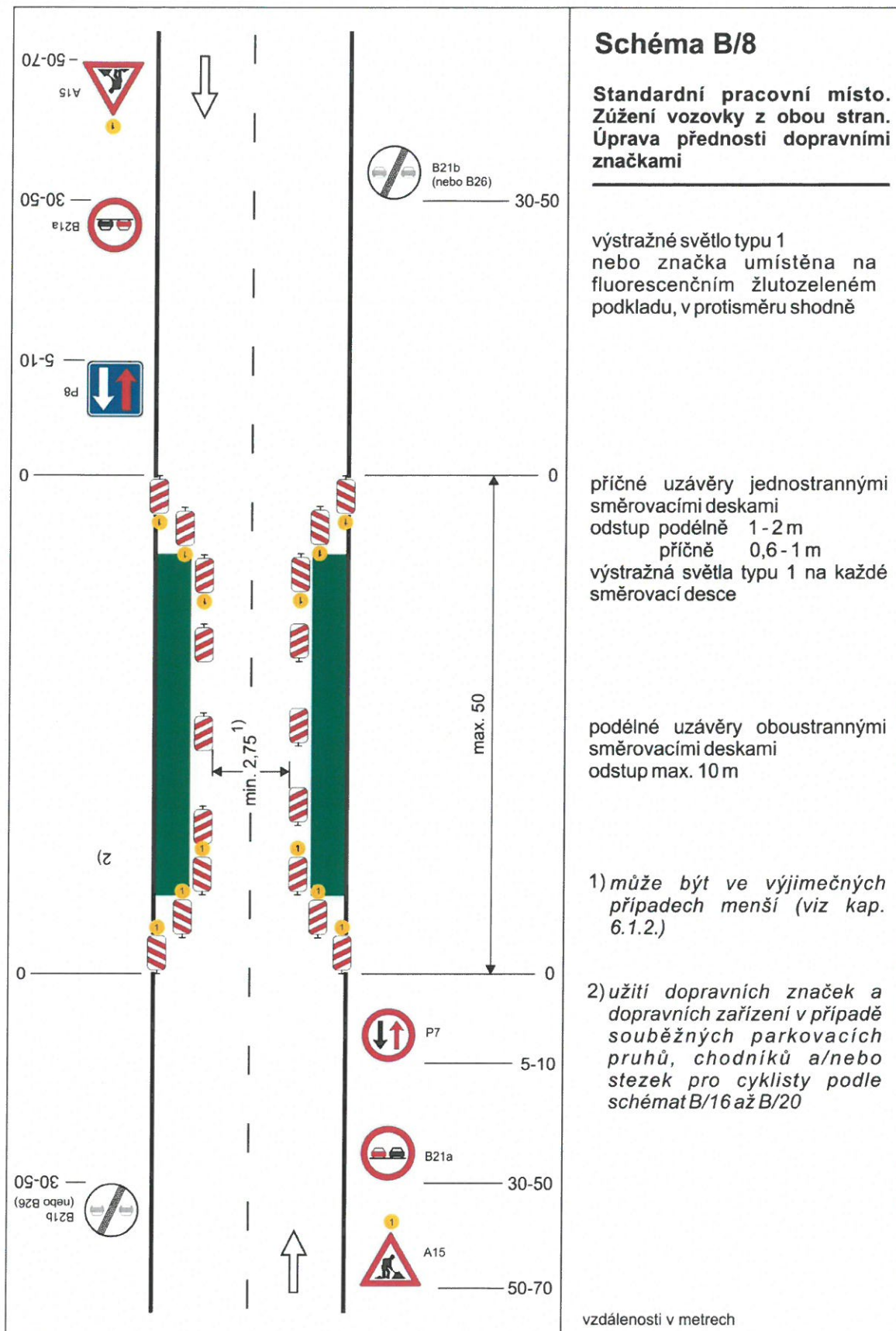


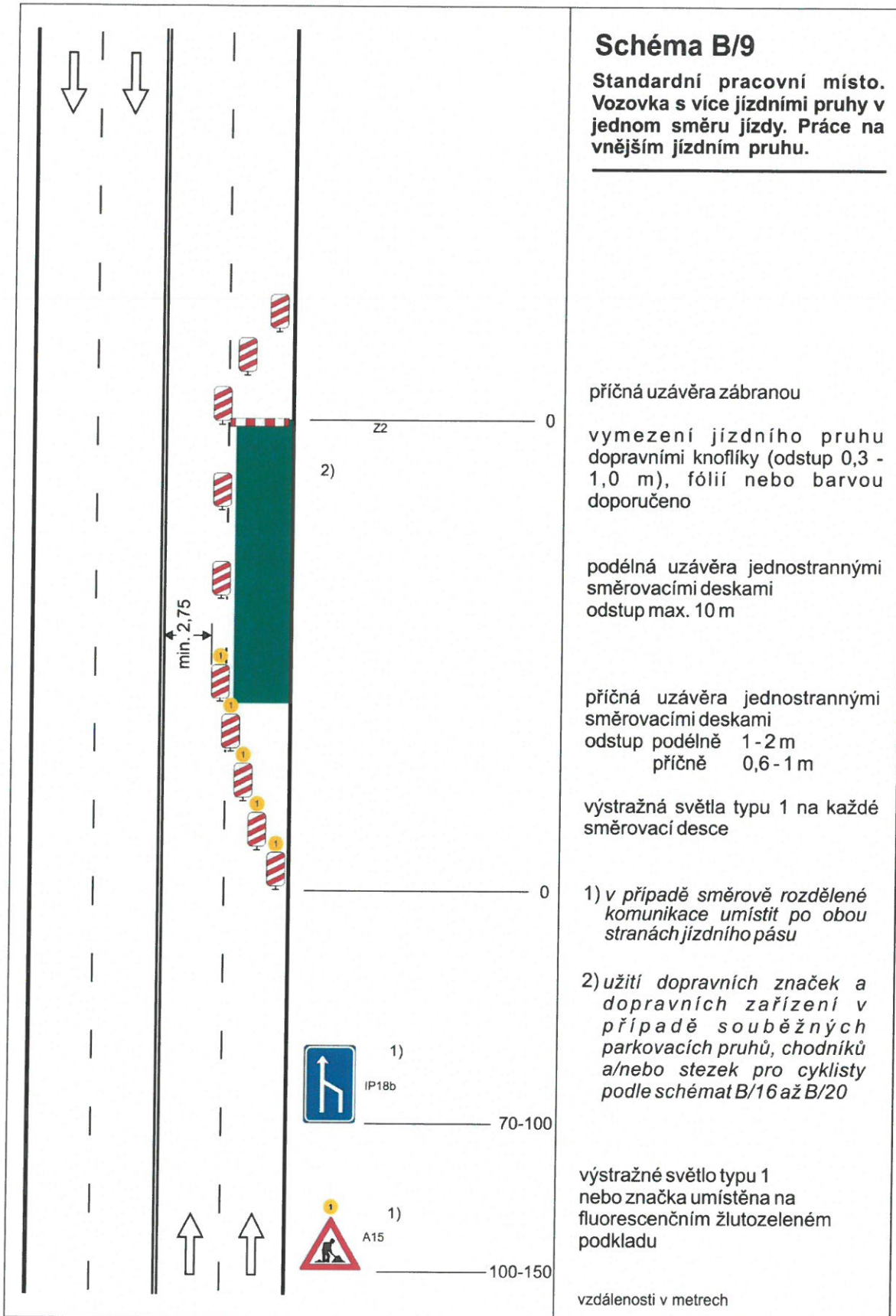


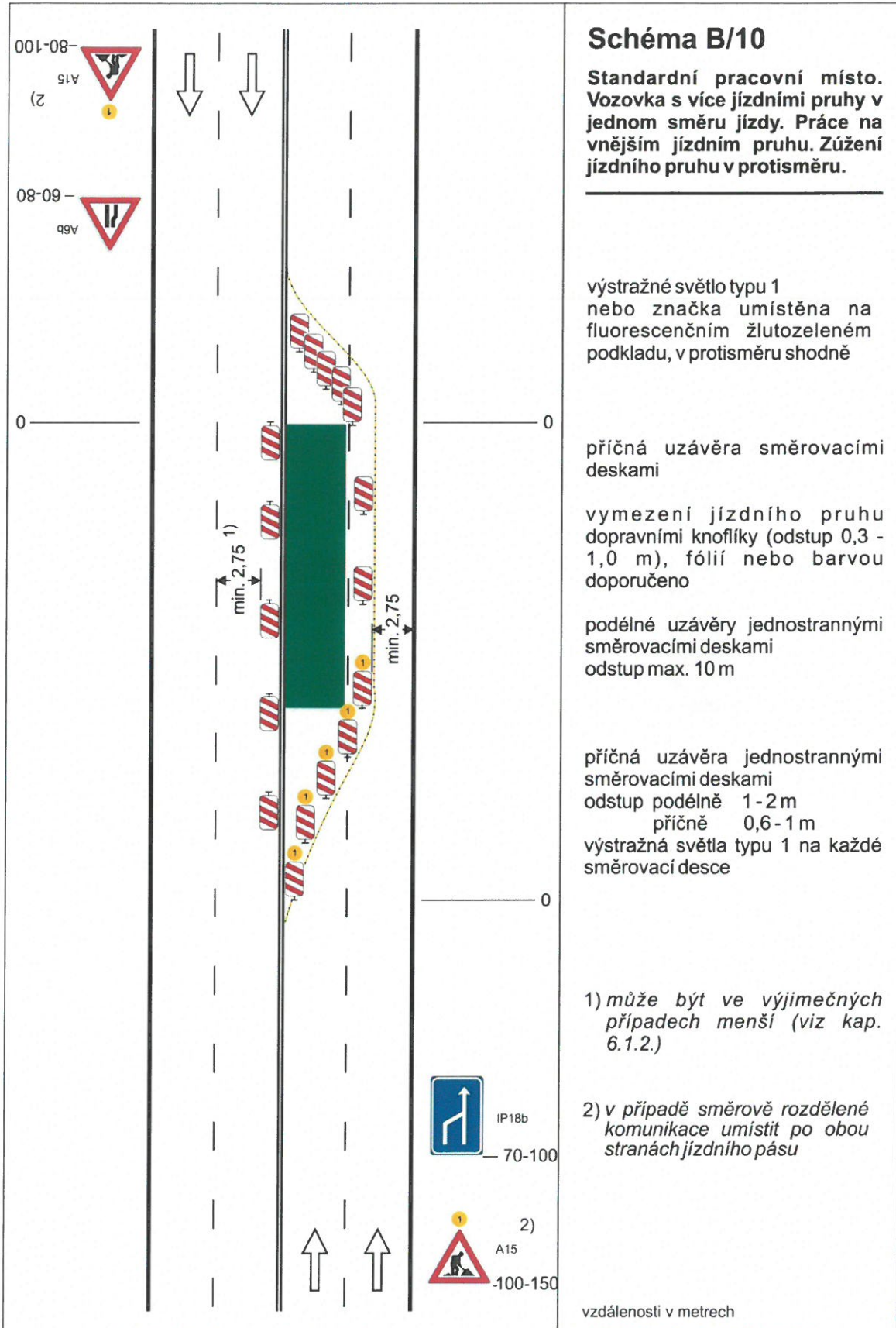


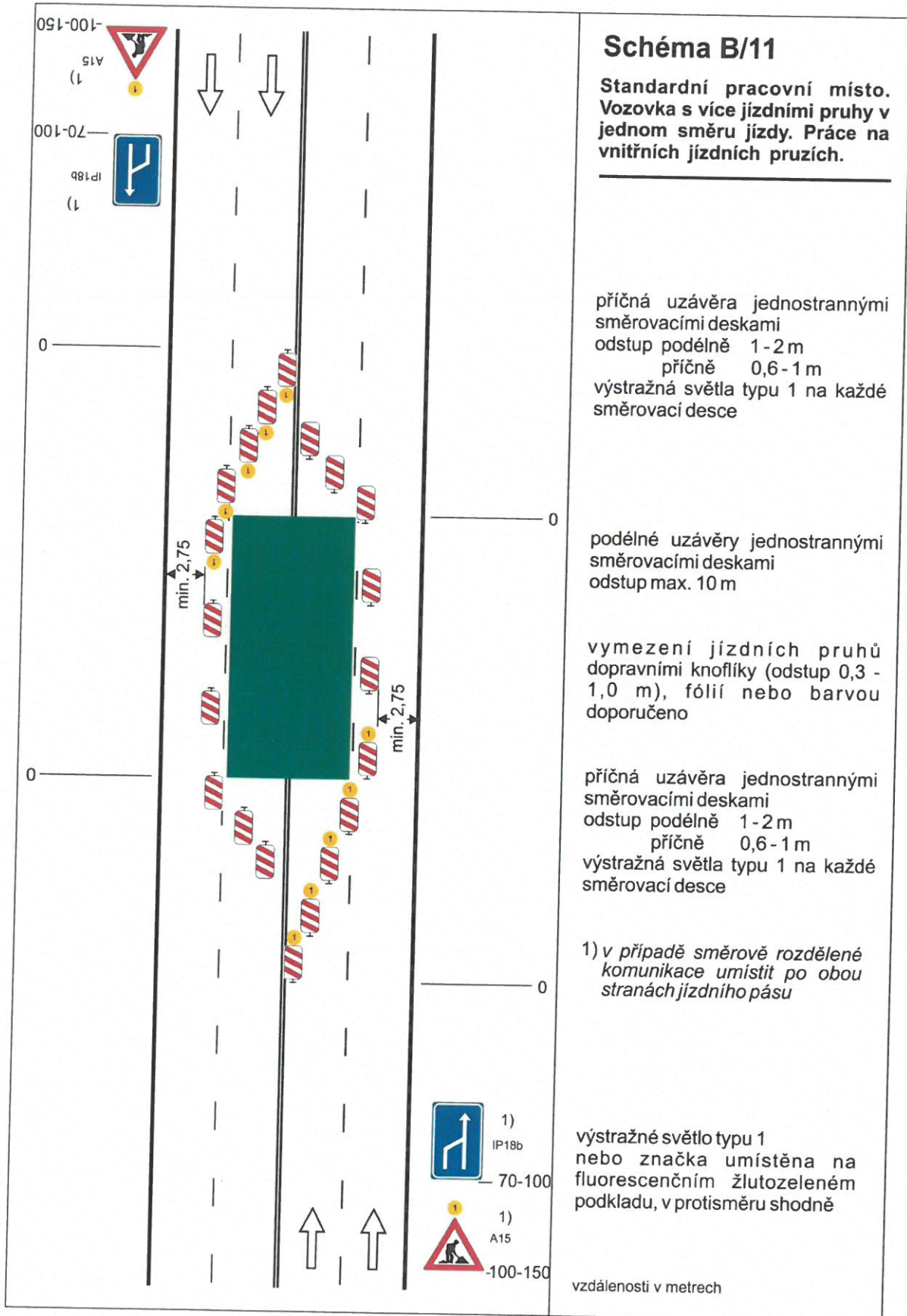


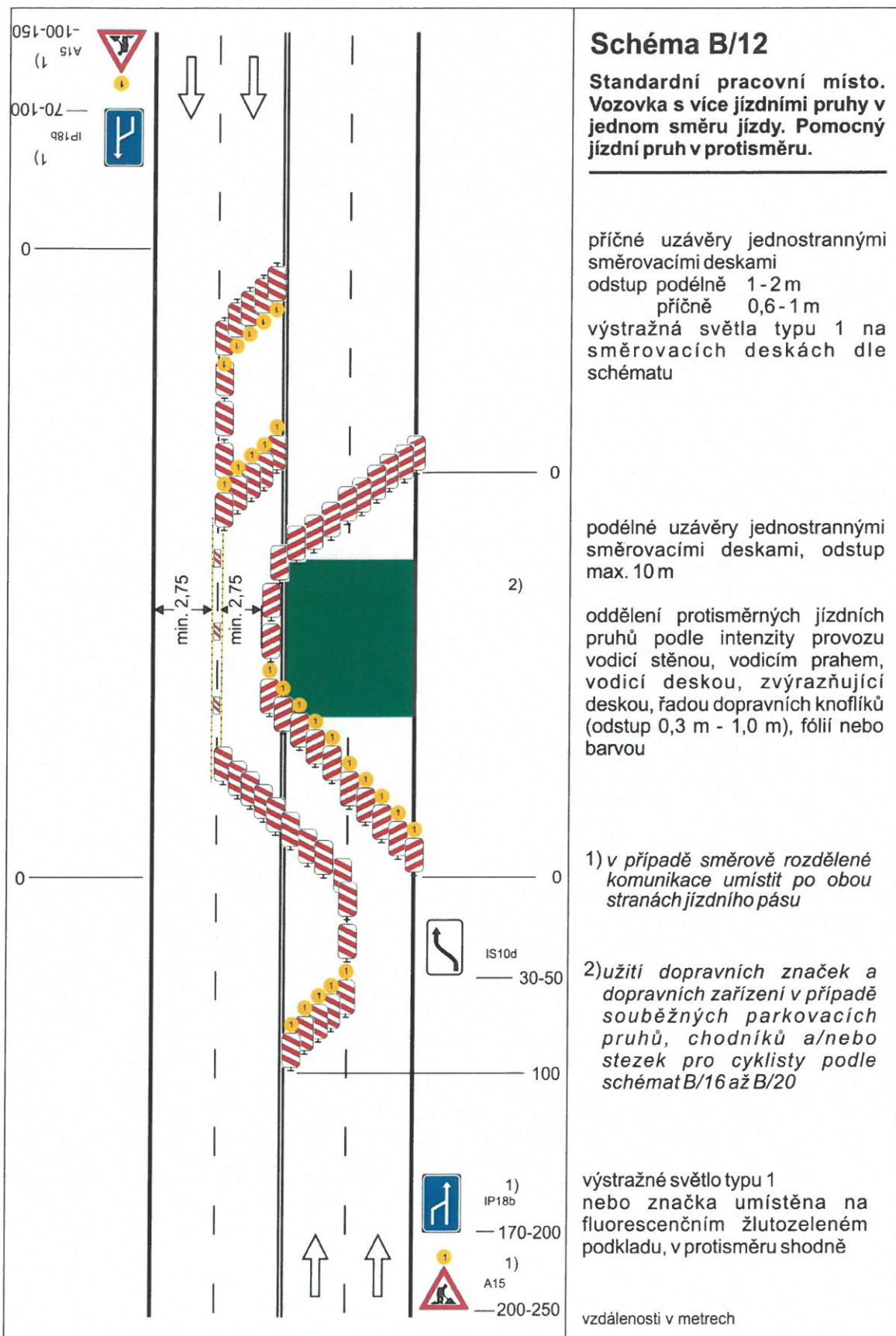


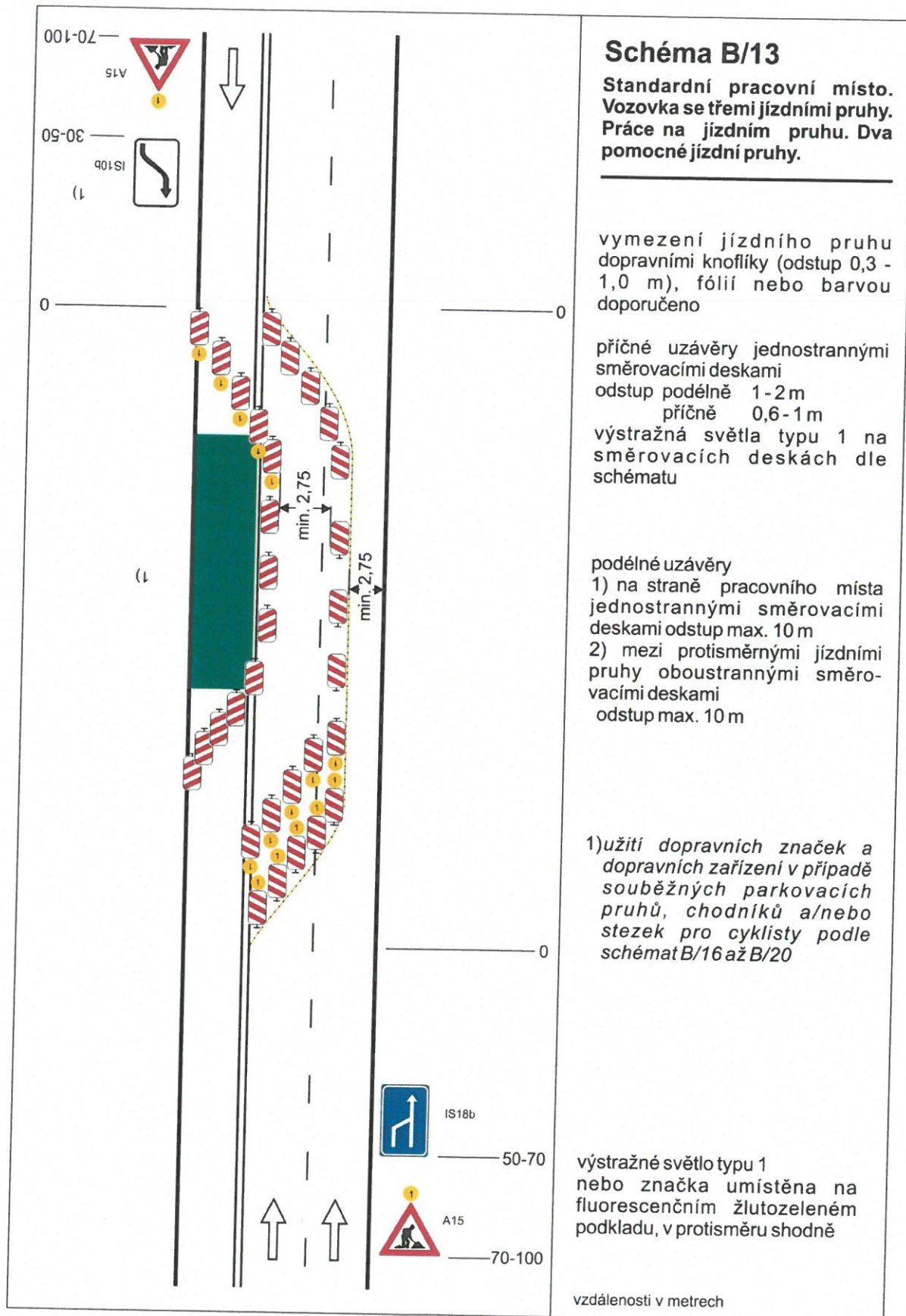


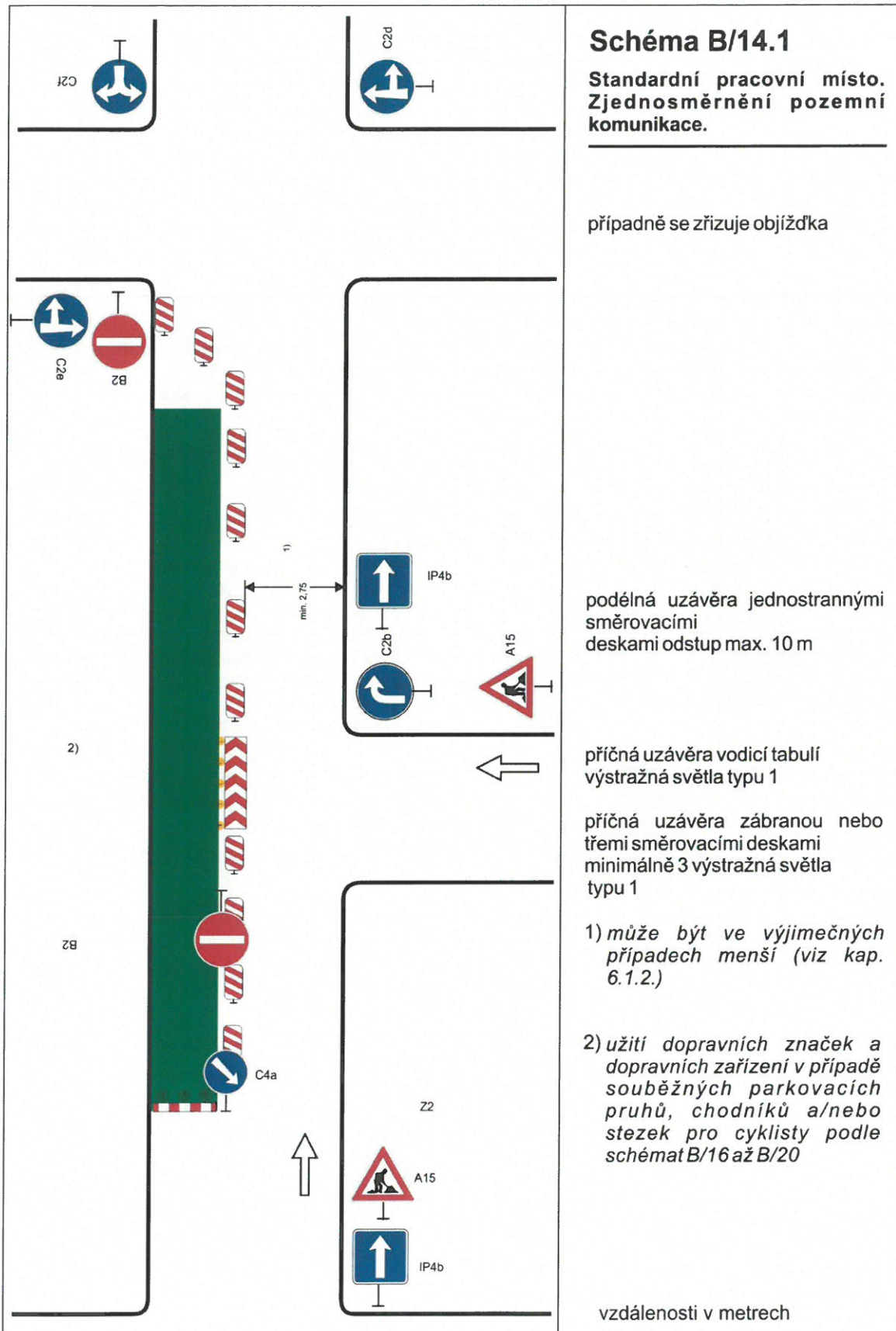




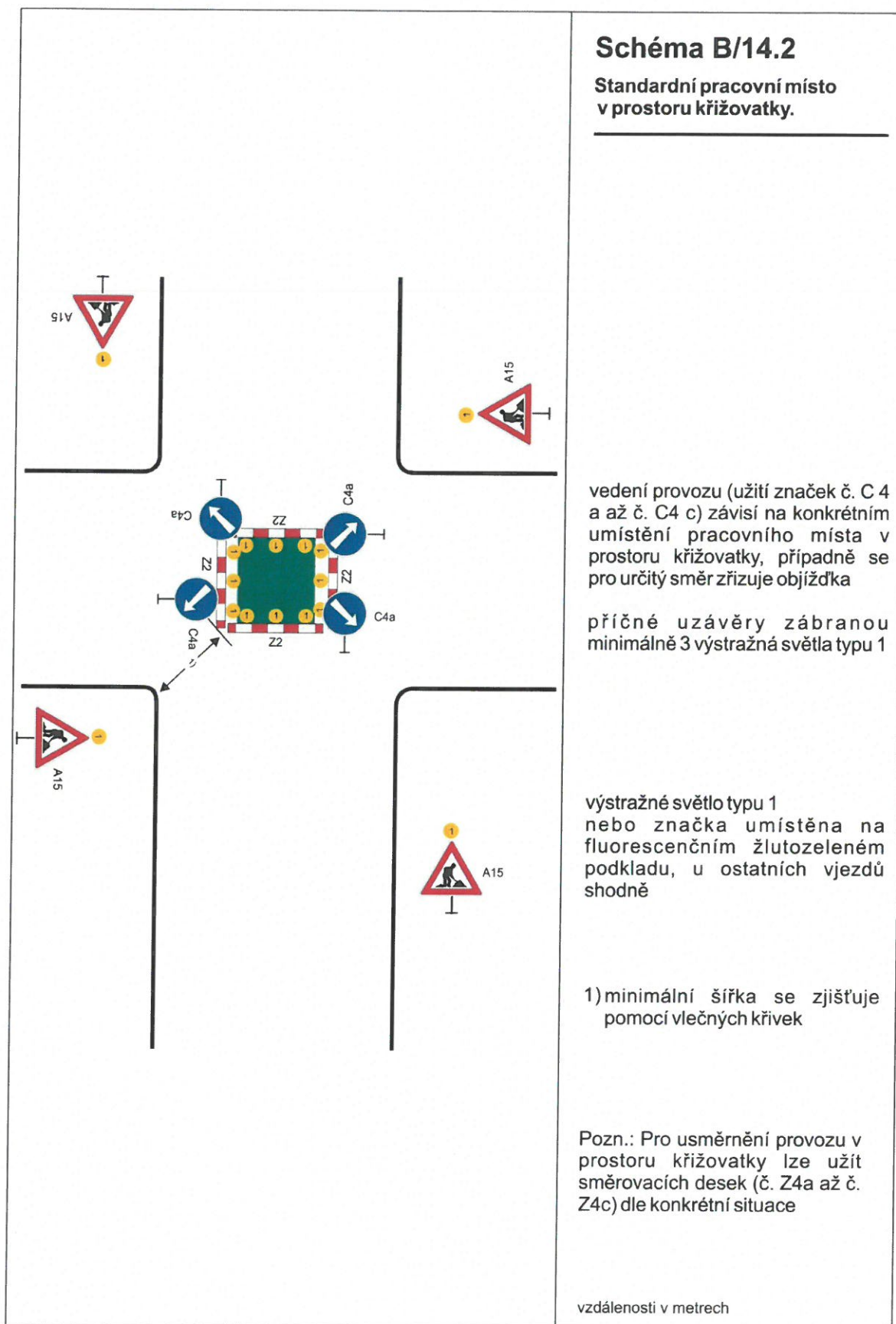


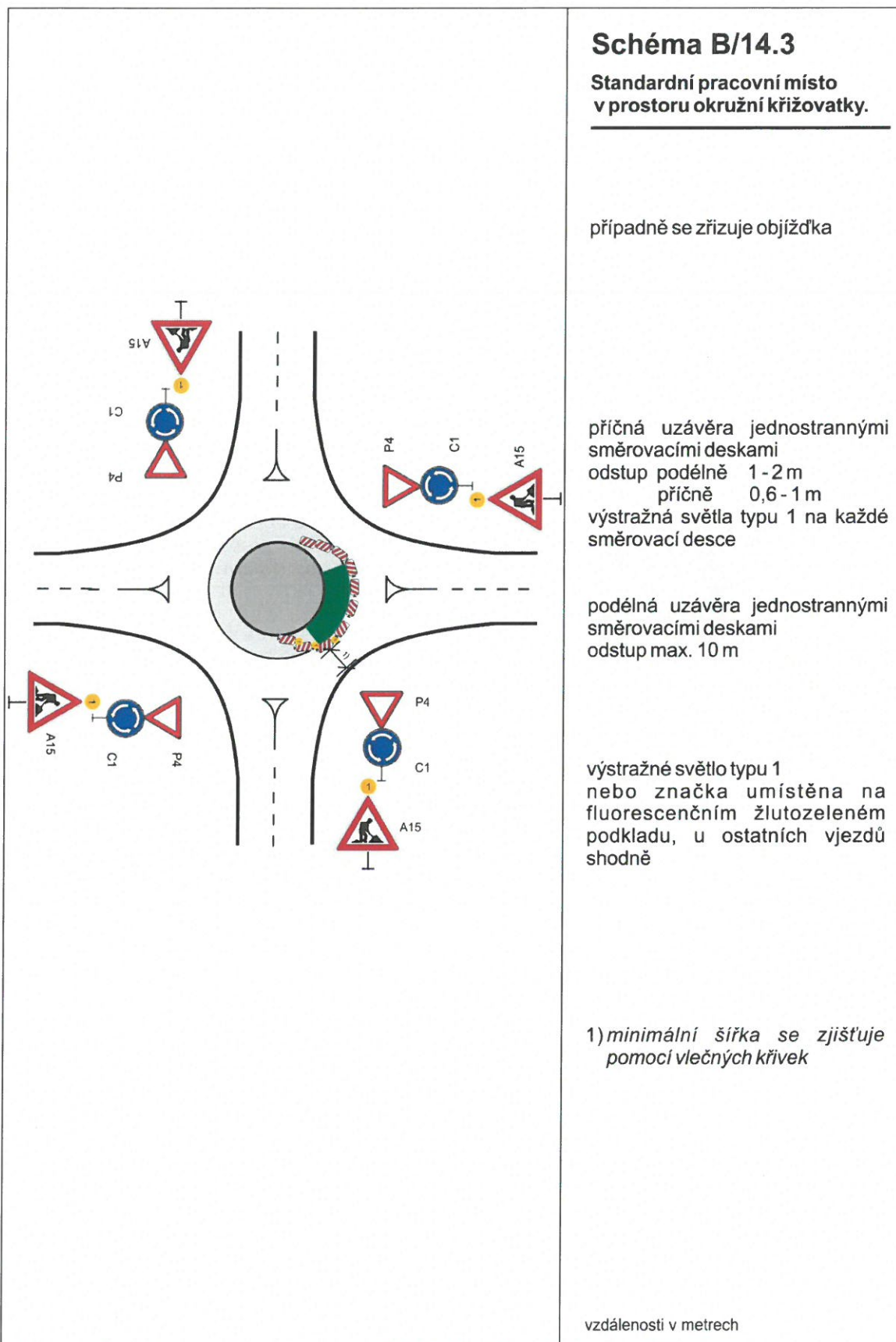


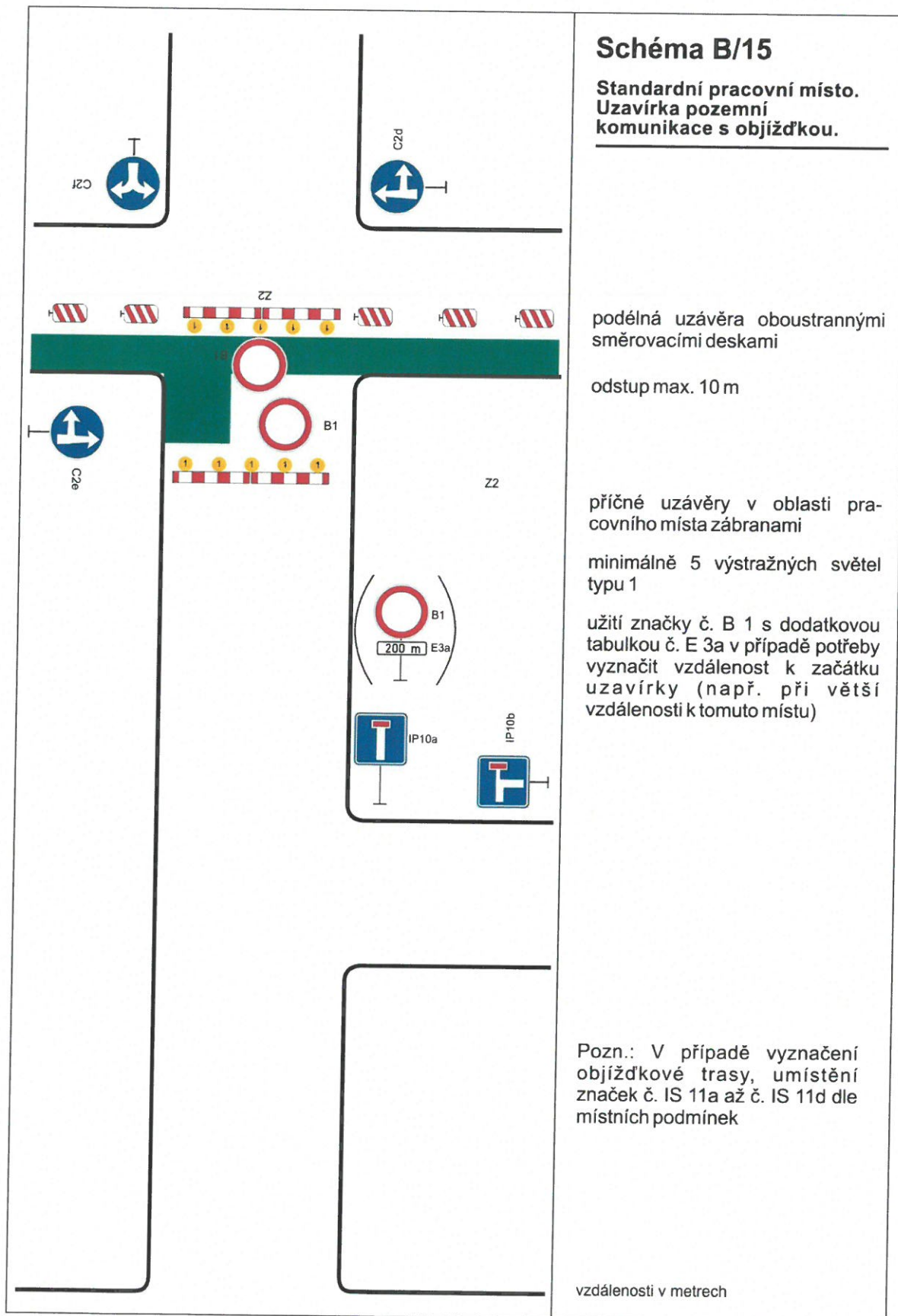


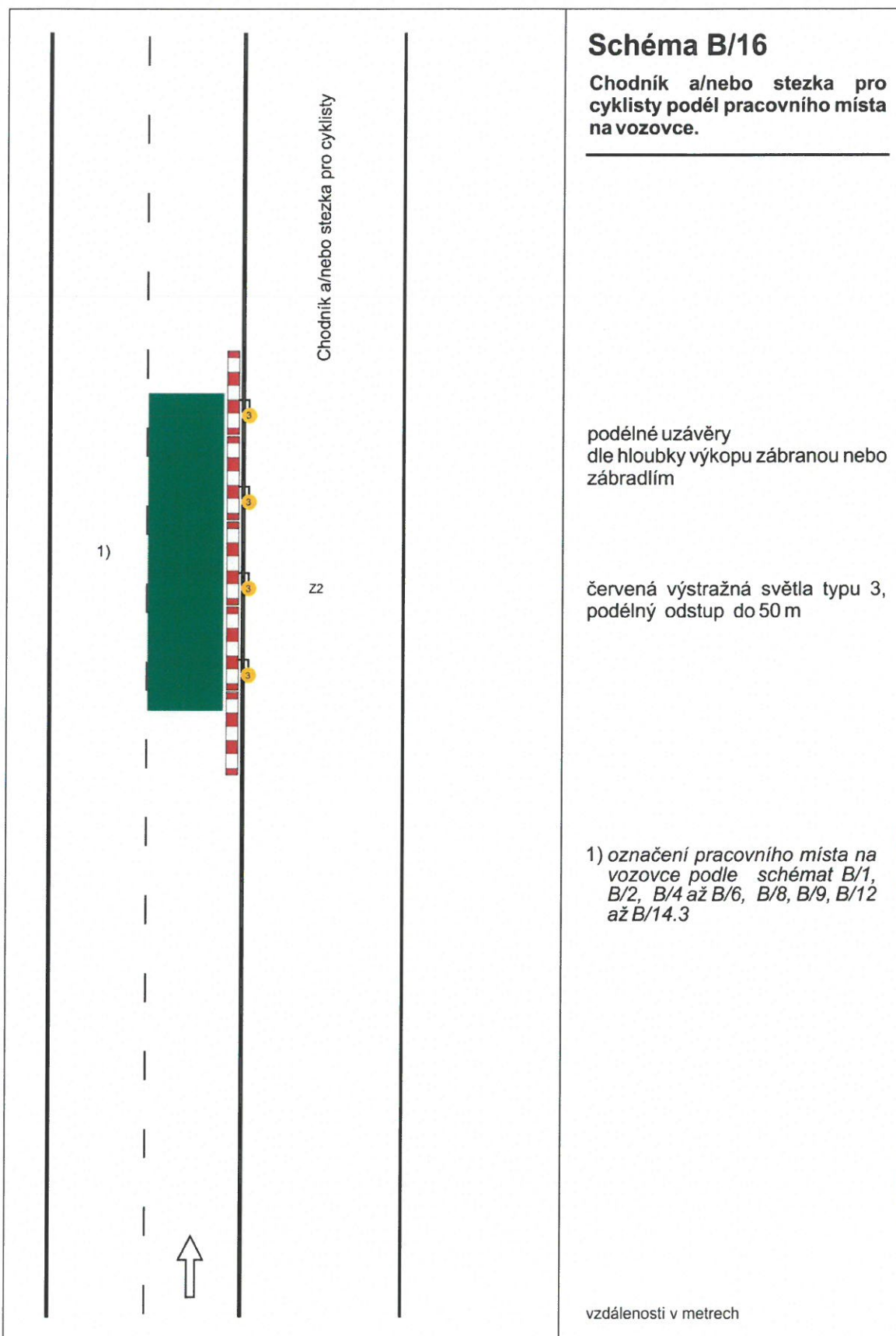


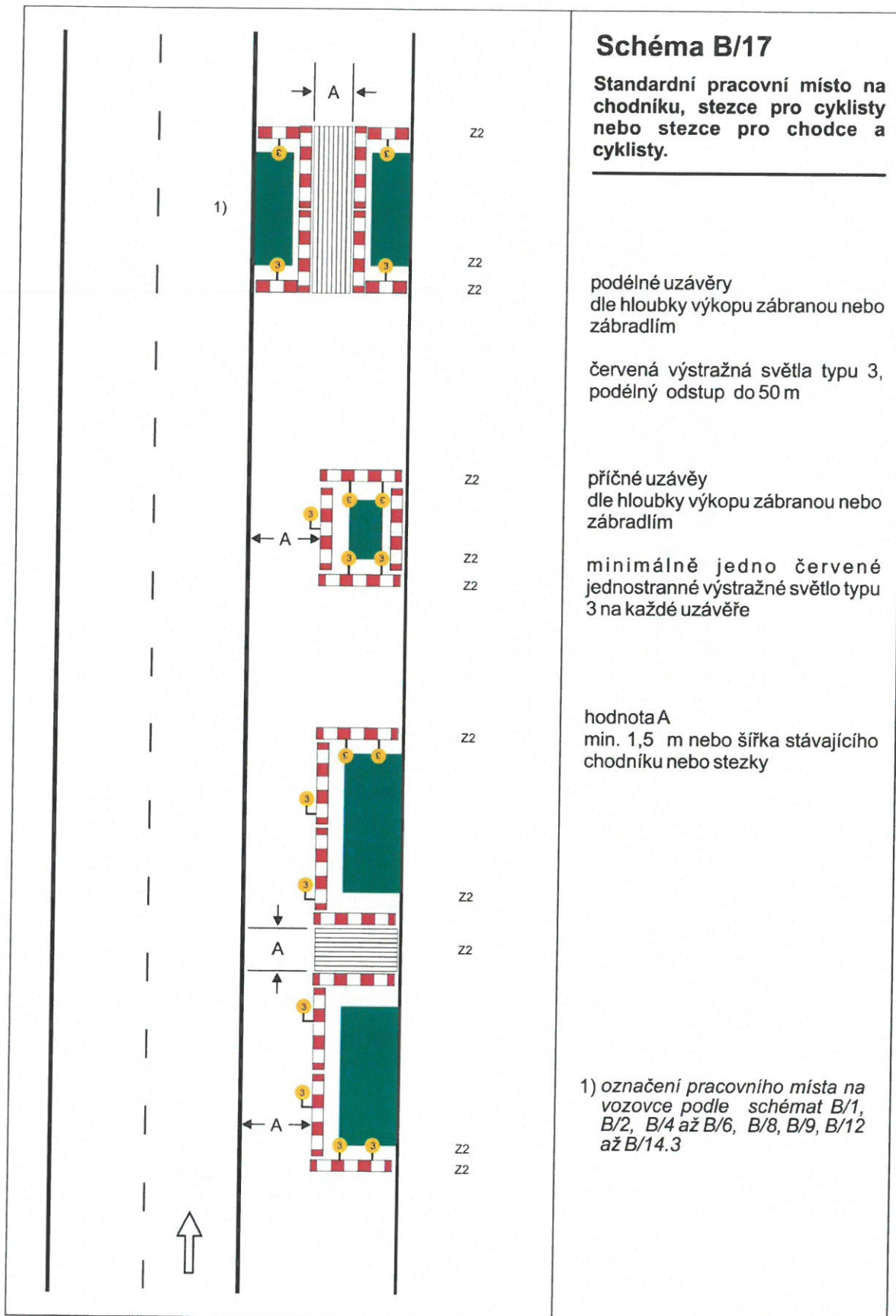












## Schéma B/17

Standardní pracovní místo na chodníku, stezce pro cyklisty nebo stezce pro chodce a cyklisty.

podélné uzávěry  
dle hloubky výkopu zábranou nebo zábradlím

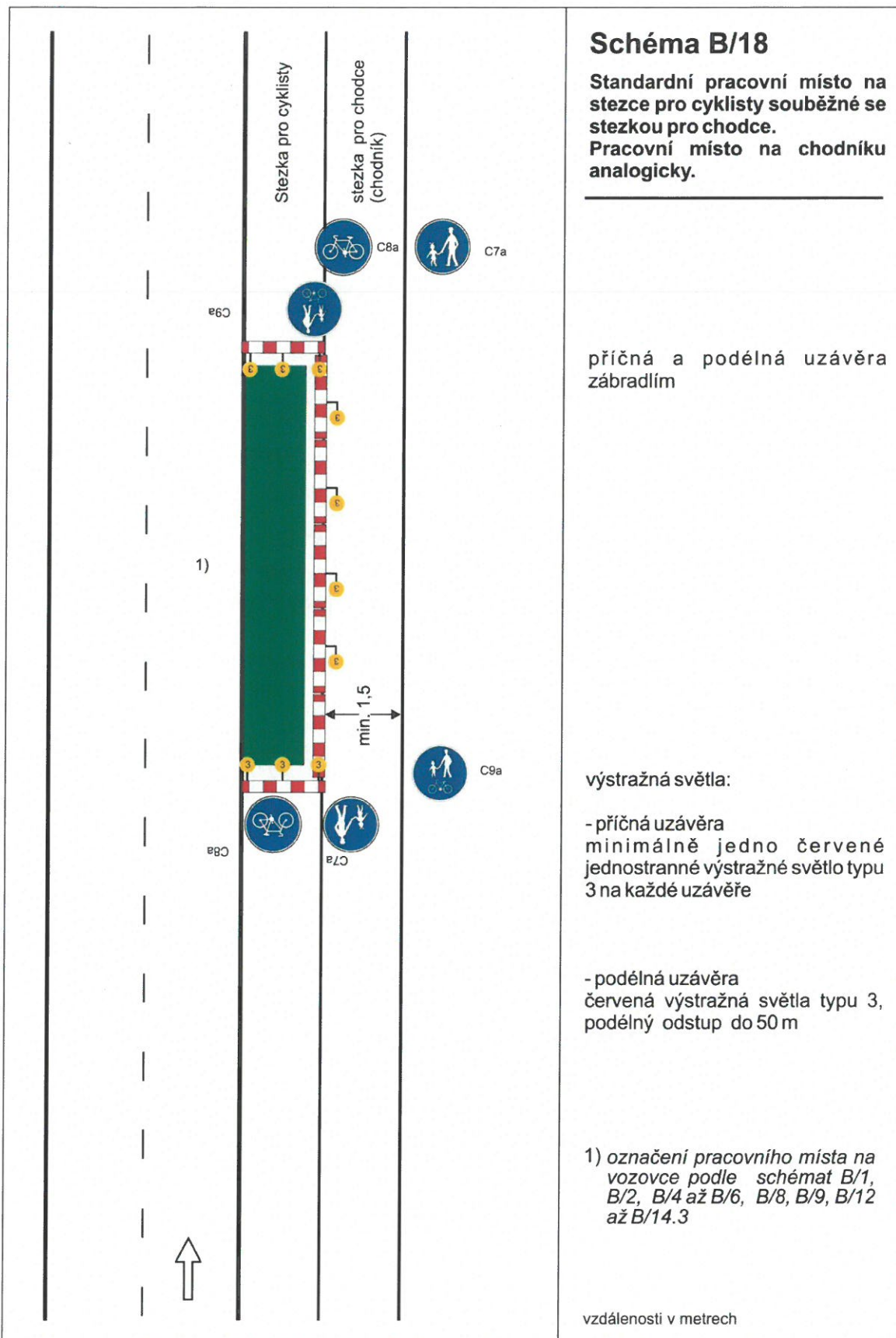
červená výstražná světla typu 3,  
podélný odstup do 50 m

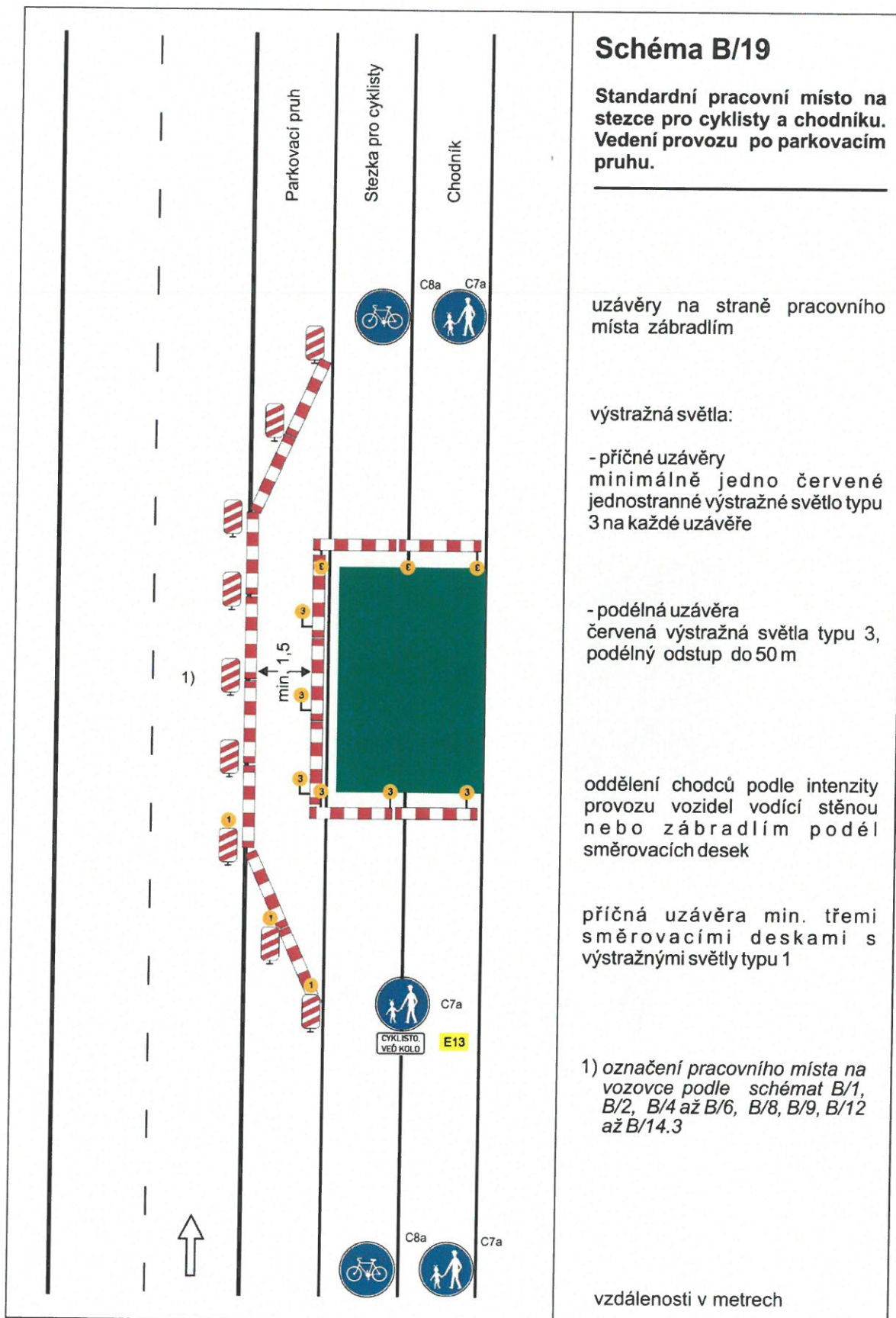
příčné uzávěry  
dle hloubky výkopu zábranou nebo zábradlím

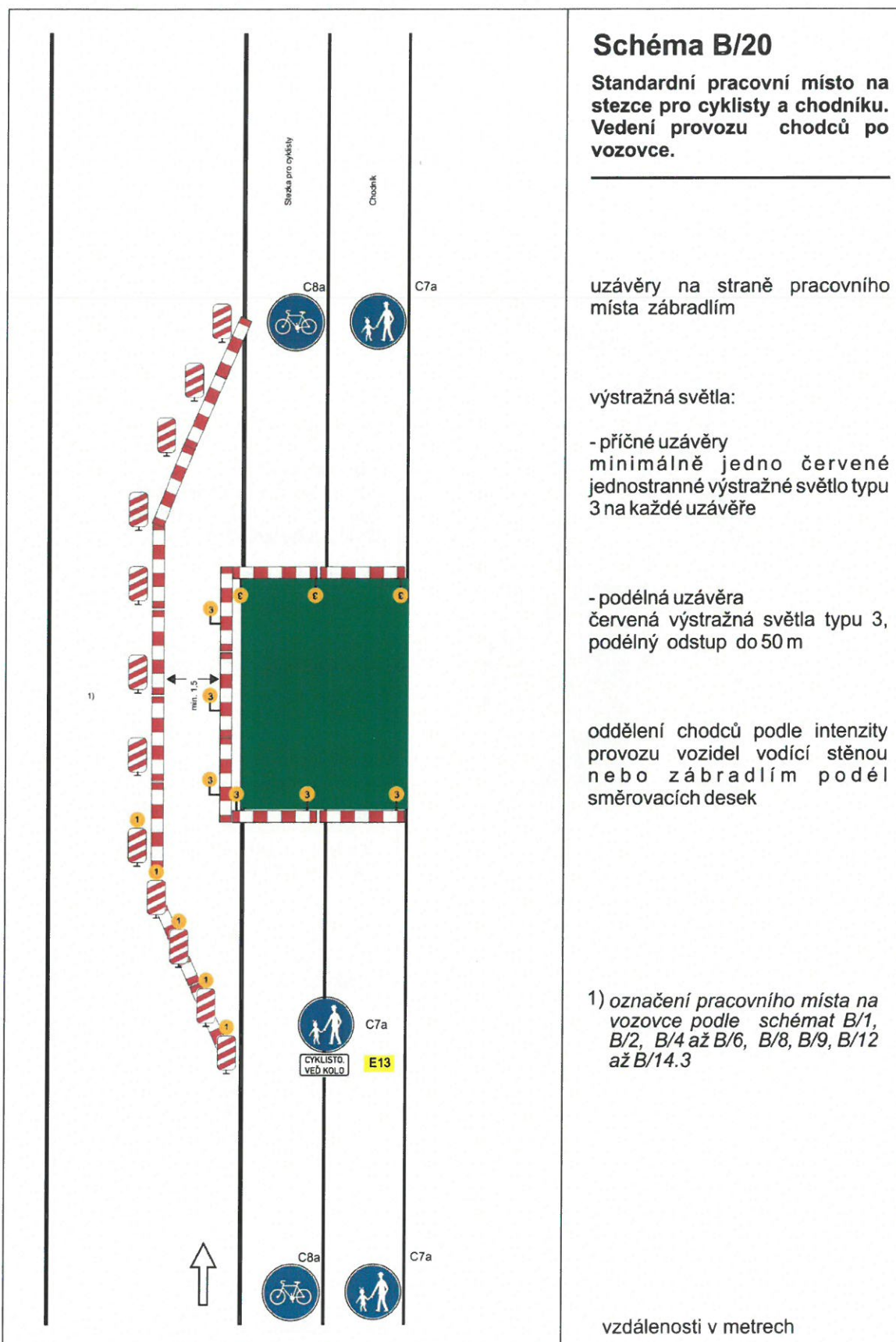
minimálně jedno červené  
jednostranné výstražné světlo typu  
3 na každé uzávěře

hodnota A  
min. 1,5 m nebo šířka stávajícího  
chodníku nebo stezky

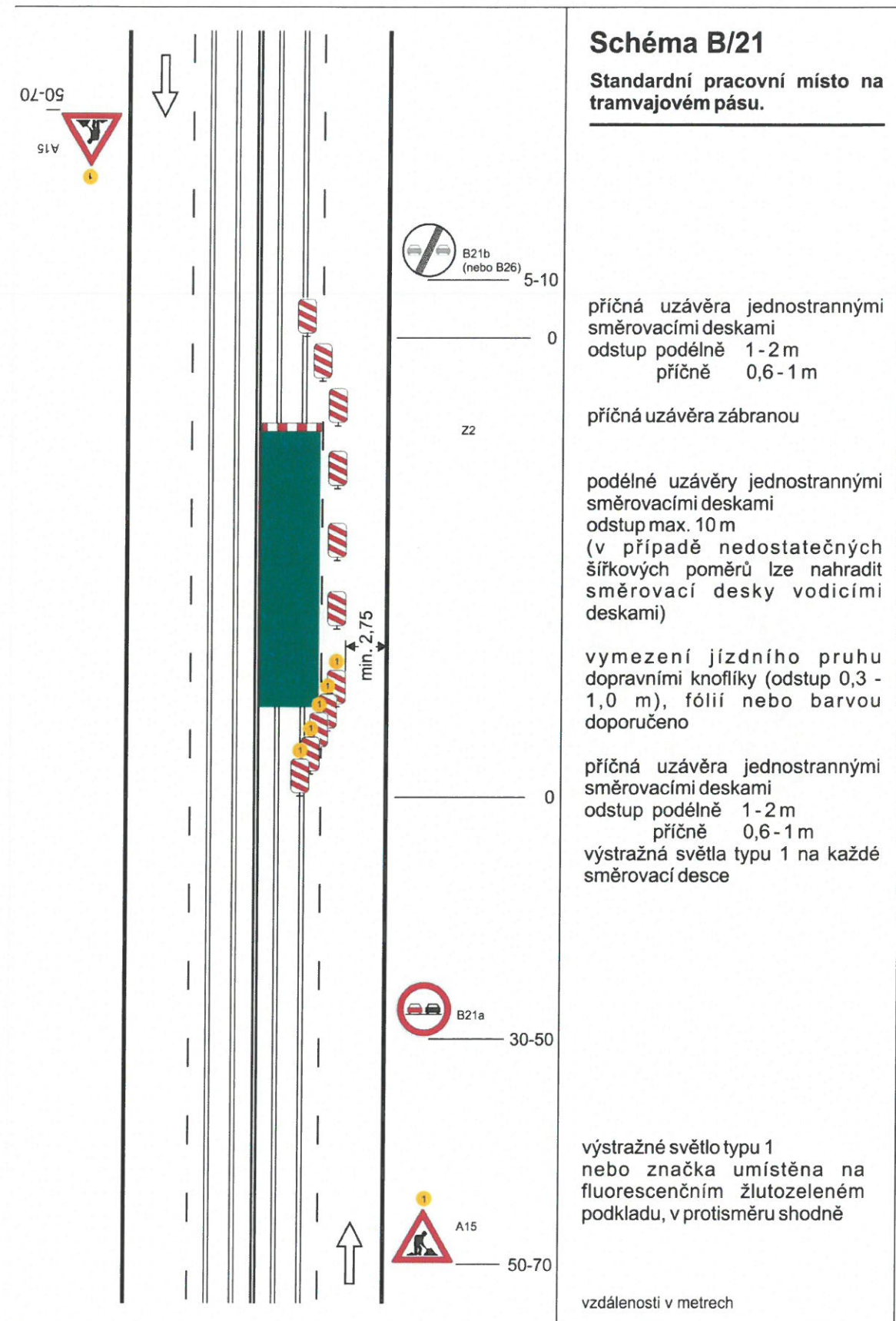
1) označení pracovního místa na vozovce podle schémat B/1, B/2, B/4 až B/6, B/8, B/9, B/12 až B/14.3



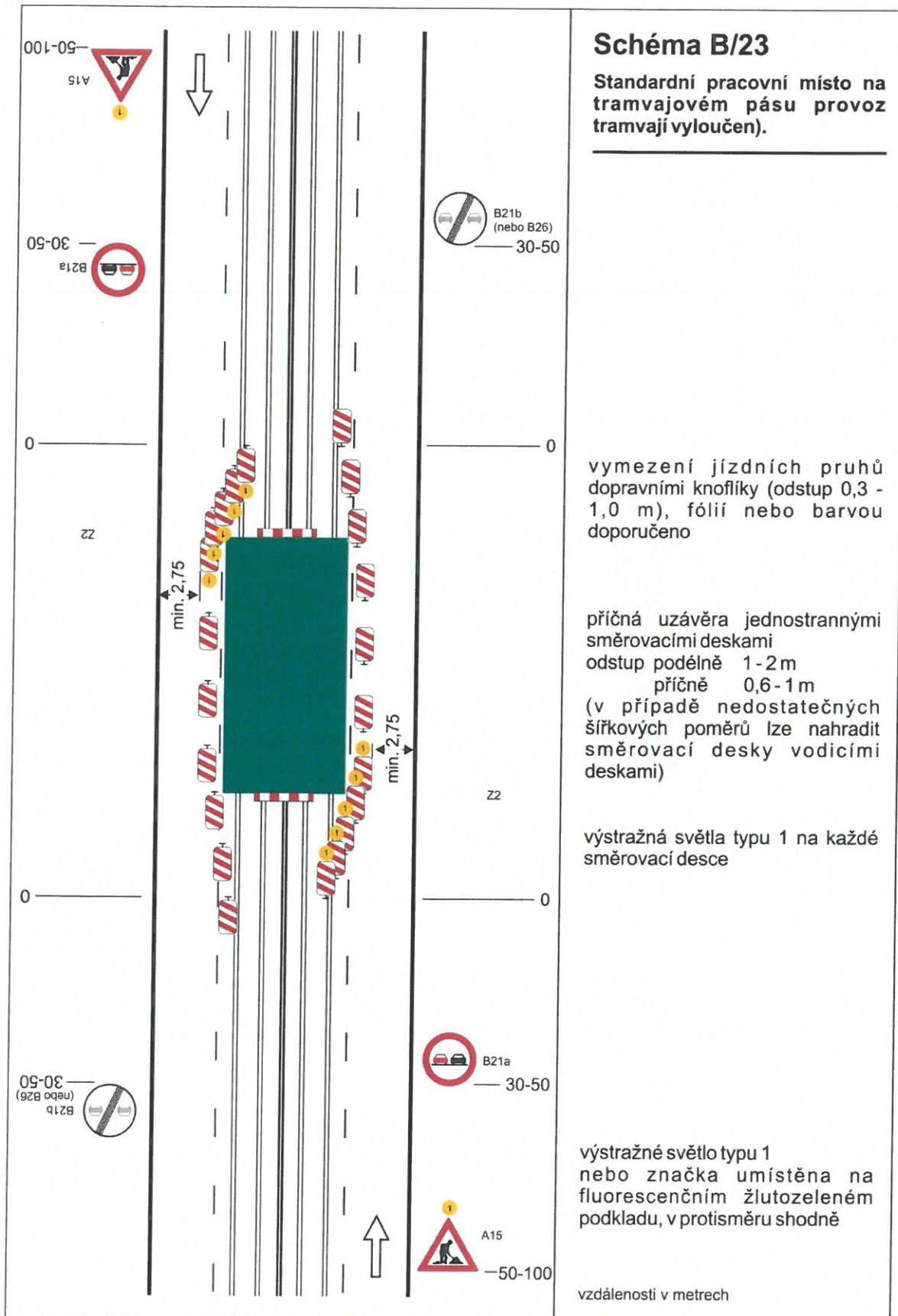


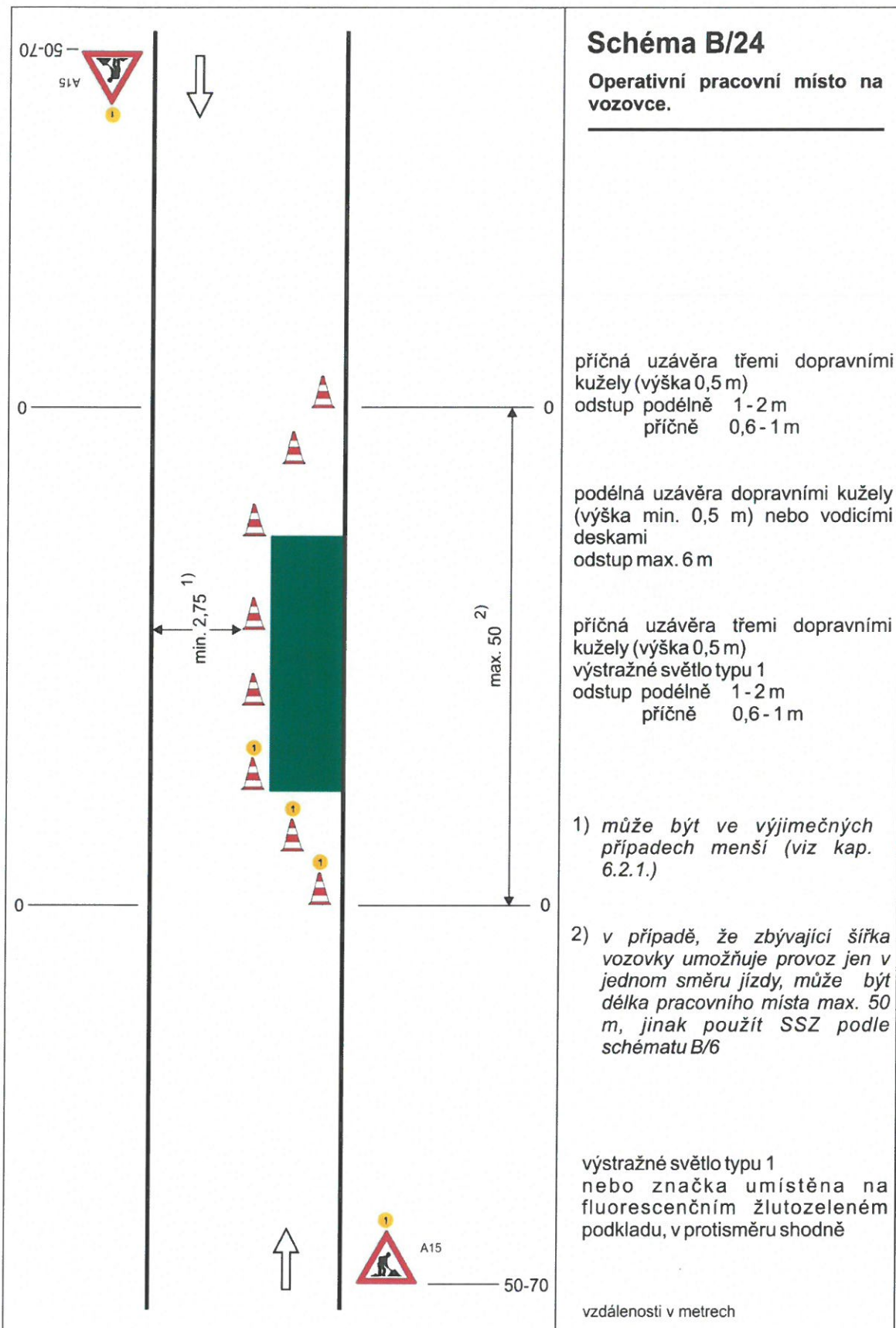


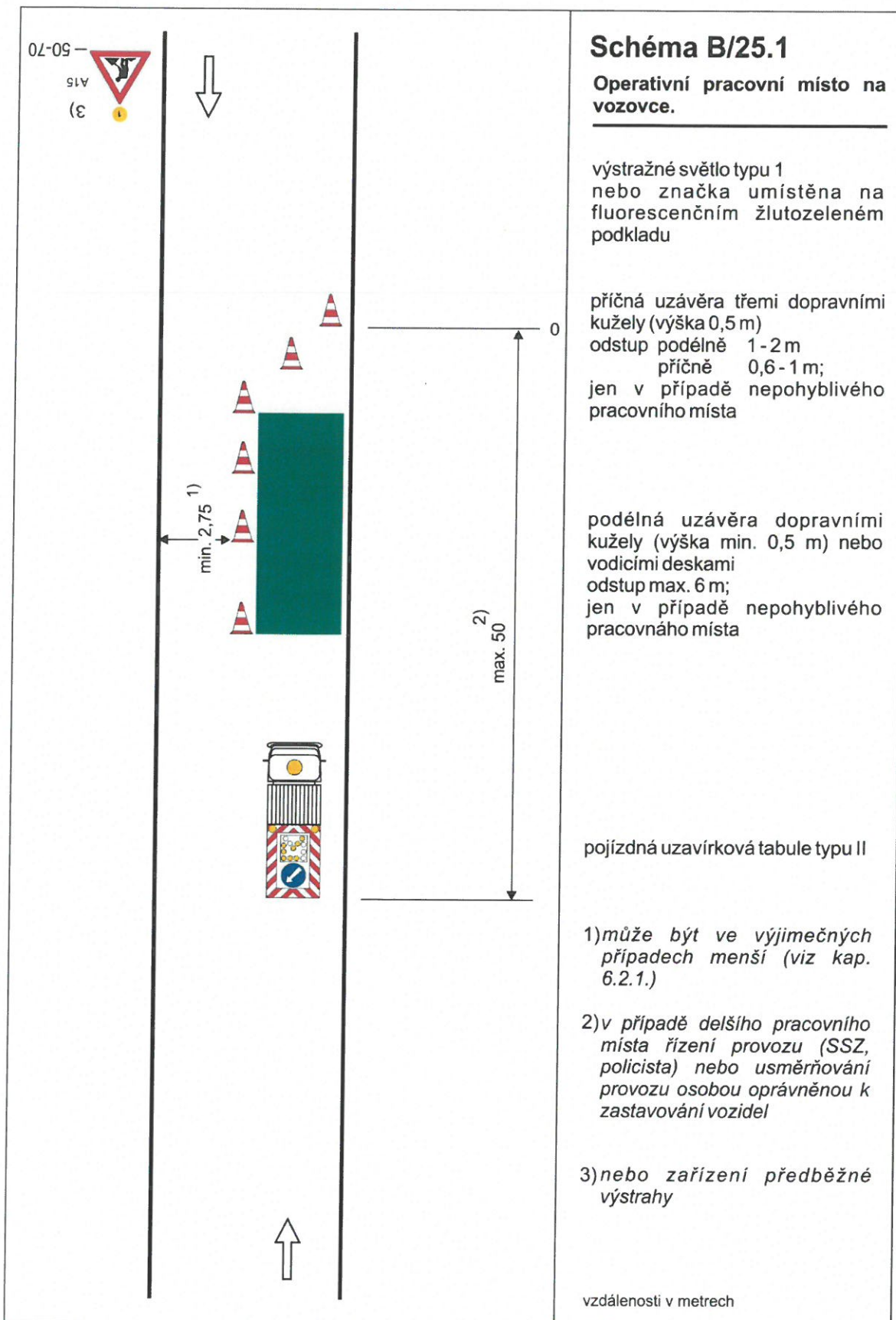


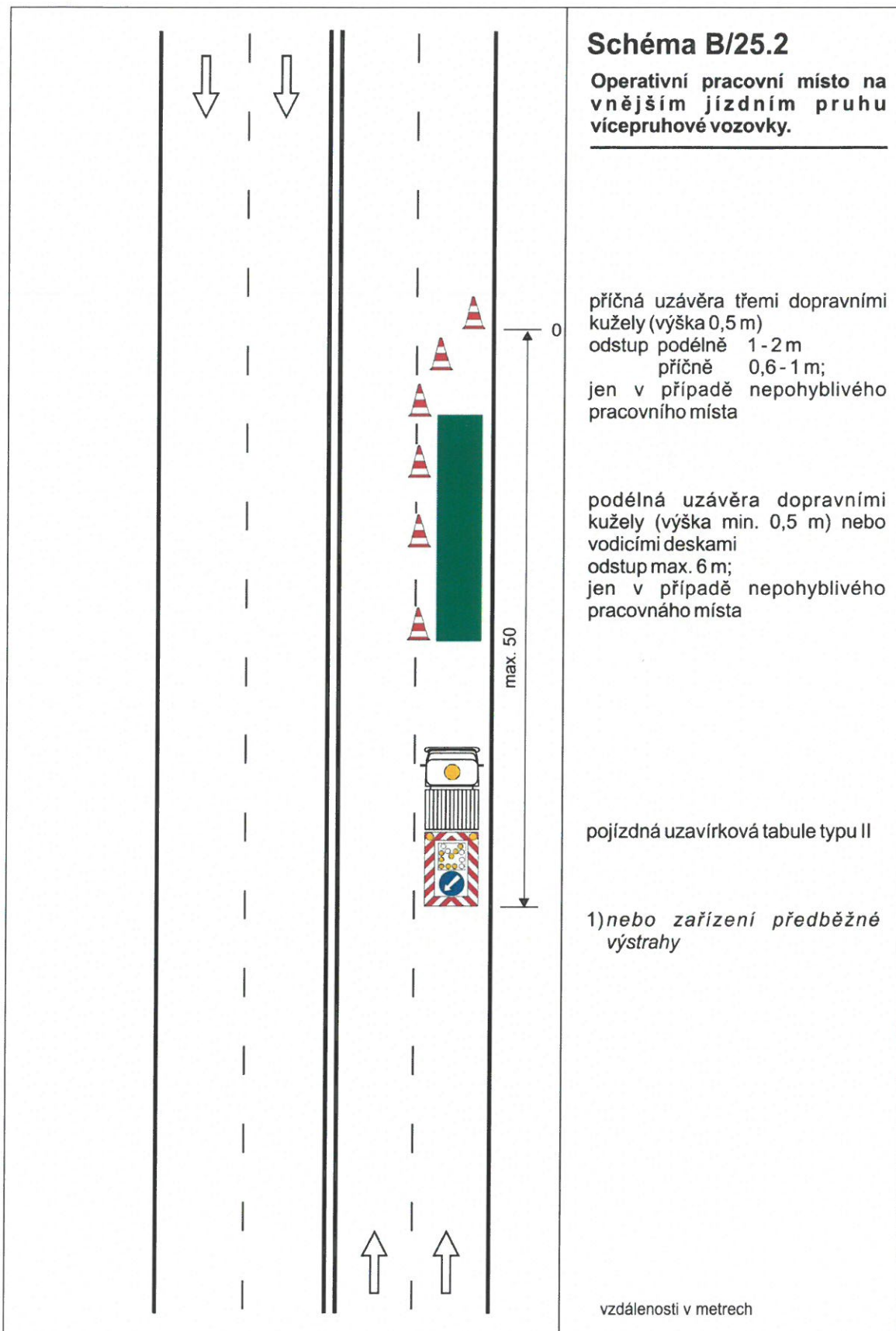


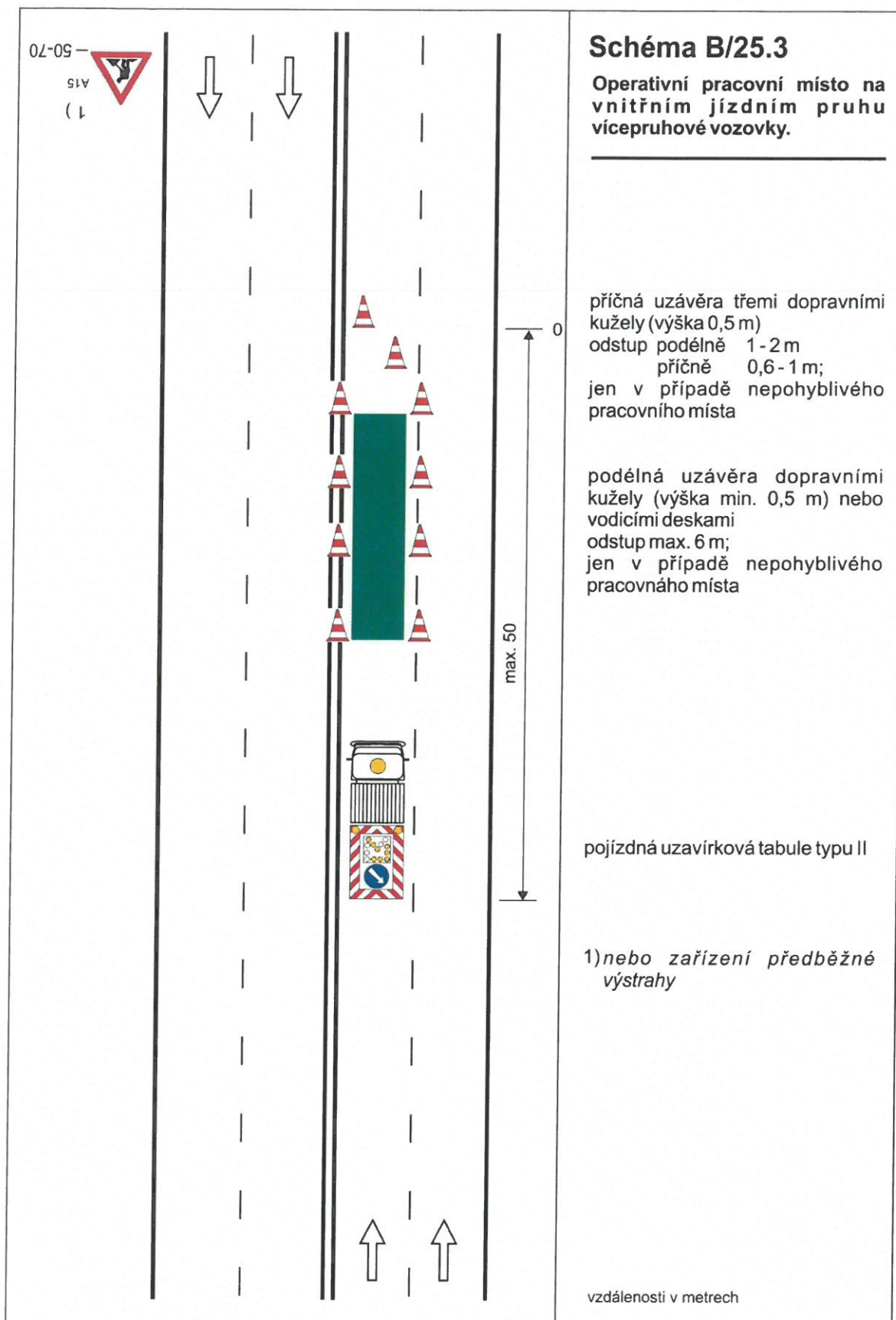


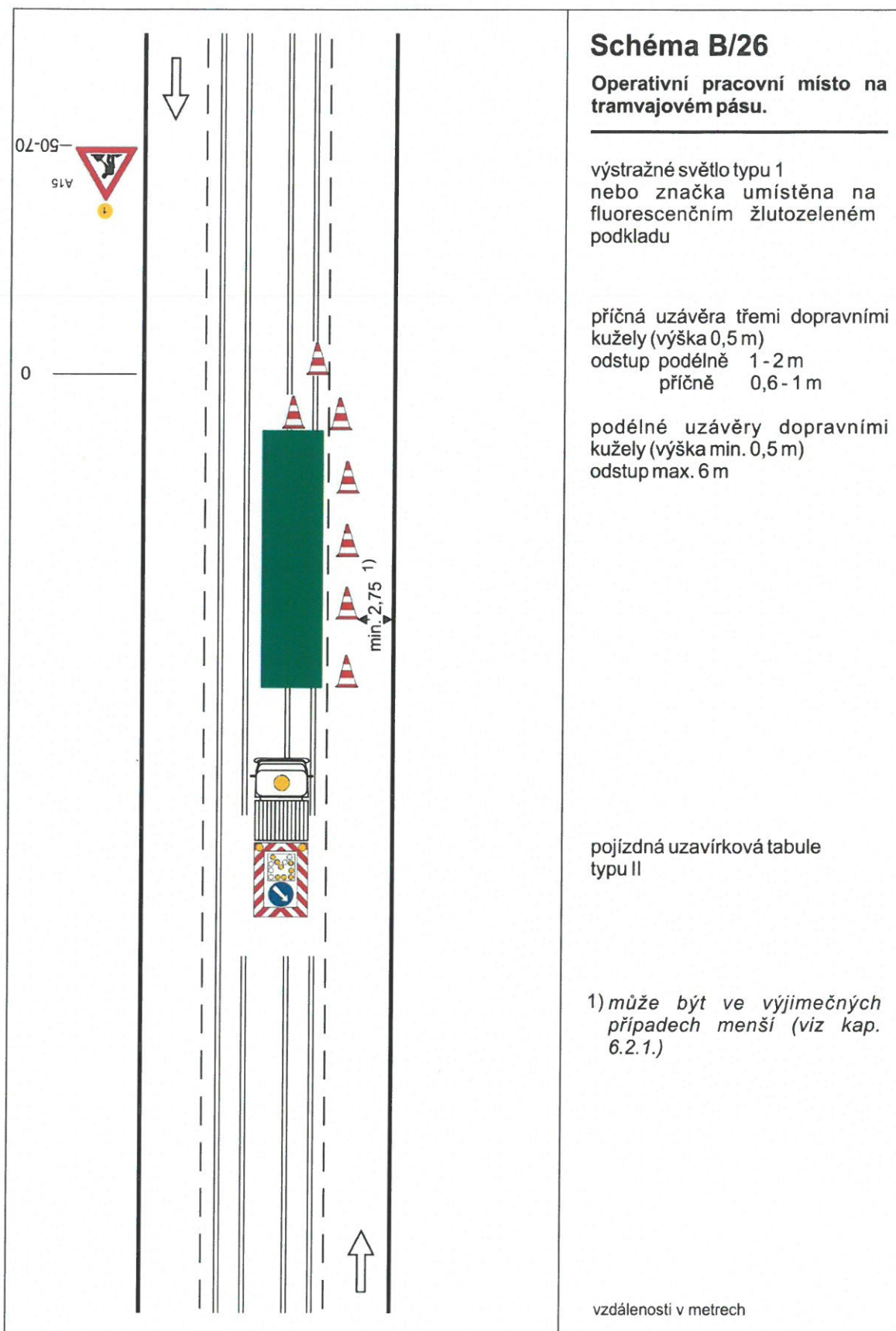














**PRACOVNÍ MÍSTA MIMO OBEC  
ŘADA C**

